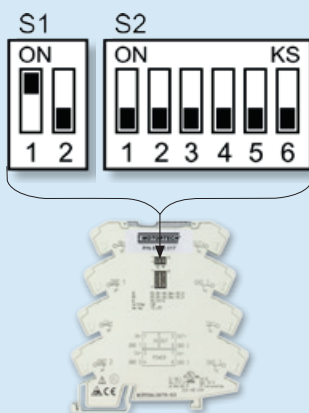


New Product	Product Update	Product Information
Technical Information	Price Update	Marketing Information
No. 2016/29	Date August 15, 2016	Page 1/2

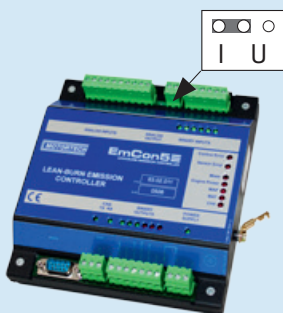
Isolation Amplifier P/N 63.02.017 Control of two VariFuel2 Air/Gas Mixers with EmCon5 Emissions Controller

Using the isolation amplifier P/N 63.02.017, you can pass on the position signal of an EmCon5 emissions controller to a second VariStep3 stepper motor driver. This way you can control two VariFuel2 air/gas mixers with one EmCon5 emissions controller on a V-engine. Please note:

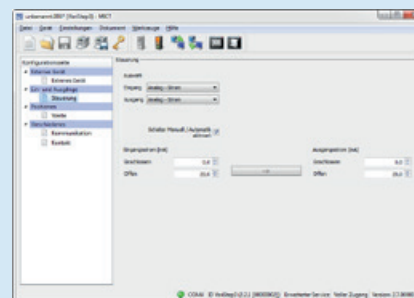
1. On the isolation amplifier, the DIP switches of banks S1 and S2 must be set as shown.



2. The jumper of the control output *Mixer Output* of the EmCon5 must be set in current (I) position as shown (see EmCon5 Operating Manual). For measuring manifold pressure (MAP) and manifold temperature (MAT), use sensors on bank A (see illustration on page 2).

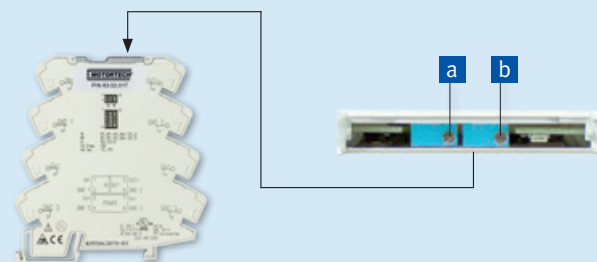


3. In the configuration of both VariStep3 stepper motor drivers, Analog Current must be set as control input and 0 to 20 mA as input current (see VariStep3 Operating Manual).



4. Wire only in a disconnected state and with the engine switched off (see illustration on page 2).

5. If necessary, deviations in the incoming control signal at the VariStep3 of the B bank can be corrected with the potentiometers of the isolation amplifier. The zero potentiometer **b** shifts the signal, the span potentiometer **a** adjusts the signal span.



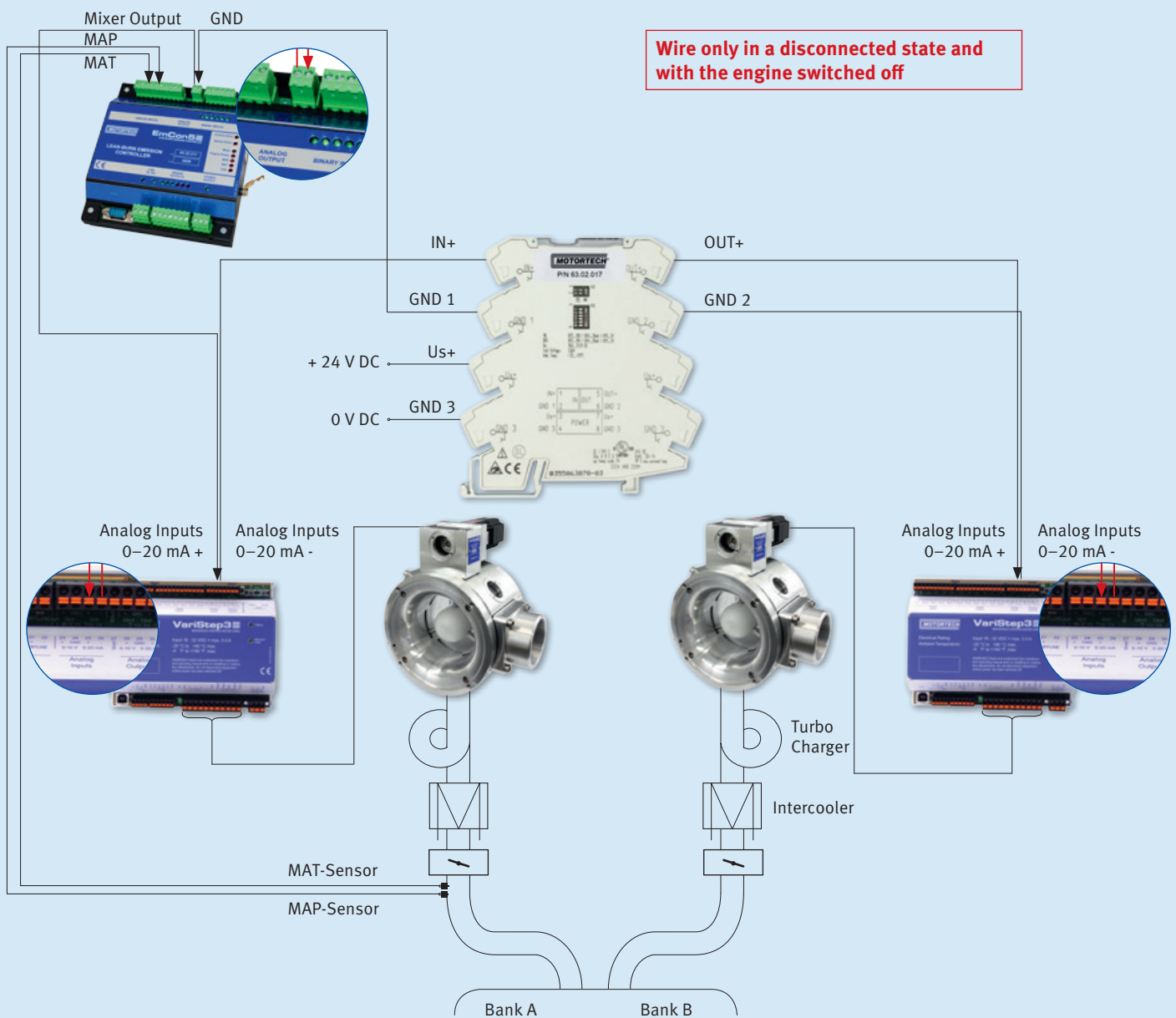
DISTRIBUTION

Customers / others	Yes
Representatives and Sales Partners	Yes
OEM partners	Yes
MOTORTECH subsidiaries	Yes

New Product	Product Update	Product Information
Technical Information	Price Update	Marketing Information
No. 2016/29	Date August 15, 2016	Page 2/2

Wiring

Please note the hint on page 1.



MOTORTECH GmbH
 Hogrevestr. 21-23
 29223 Celle, Germany
 Phone: +49 5141 - 93 99 0
 Fax: +49 5141 - 93 99 99
 www.motortech.de
 motortech@motortech.de

MOTORTECH AMERICAS, LLC
 1400 Dealers Avenue, Suite A
 New Orleans, LA 70123
 Phone: +1 504 355 4212
 Fax: +1 504 355 4217
 www.motortechamericas.com
 info@motortechamericas.com

DISTRIBUTION

Customers / others	Yes
Representatives and Sales Partners	Yes
OEM partners	Yes
MOTORTECH subsidiaries	Yes