

New Product	Product Update	Product Information
Technical Information	Price Update	Marketing Information
No. 2016/33	Date September 6, 2016	Page 1/1

Thermocouple P/N 56.01.092-28 For CATERPILLAR® G3500 Series Gas Engines

The MOTORTECH thermocouple P/N 56.01.092-28 can be used on G3508/B, G3512/B, G3516/B, G3516/B, G3520/B and G3532 engines and is a direct replacement for the following OEM parts:

- CAT® P/N 383-2989 Sensor GP - TEMPERATURE
- CAT® P/N 241-9591 Sensor GP - TEMPERATURE

Next to the mentioned parts, the MOTORTECH thermocouple can be used to replace the **175-5341** Temperature Sensor Gp and the **6I-0407** Thermocouple.

If the MOTORTECH thermocouple is used to replace one of these, the engine wiring harness must be modified by replacing the bullet connector with the following item:

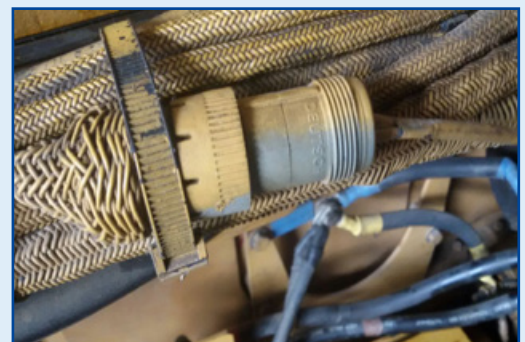
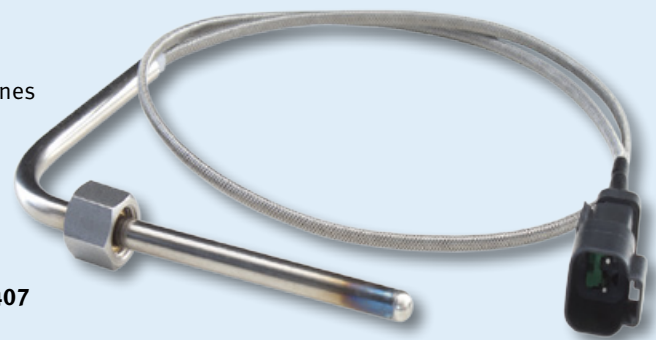
P/N	Description
P/N 75.30.046	Connector Kit (incl. housing, contacts, wedge lock)

The connector kit must be ordered separately with each thermocouple P/N 56.01.092-28.

Wiring Information

When replacing the old connector, wire the new as follows:

Engine Wiring Harness	Connector
Yellow Wire	Position 1
Red Wire	Position 2



More information on the Thermocouple is available at <http://www.motortech.de/download-centere.html> for download.

DISTRIBUTION

Customers / others	Yes
Representatives and Sales Partners	Yes
OEM partners	Yes
MOTORTECH subsidiaries	Yes