

## Product Update

# ALL-IN-ONE



## New ECU List MOTORTECH – Release 1.6.0

The new MOTORTECH ECU list version 1.6.0 is now available for MOTORTECH generator & CHP control systems ALL IN-ONE.GAS, ALL-IN-ONE.NTC and ALL IN-ONE.NT.

### Download

The new MOTORTECH ECU list including a detailed new features list can be downloaded at the following address (458 KB):

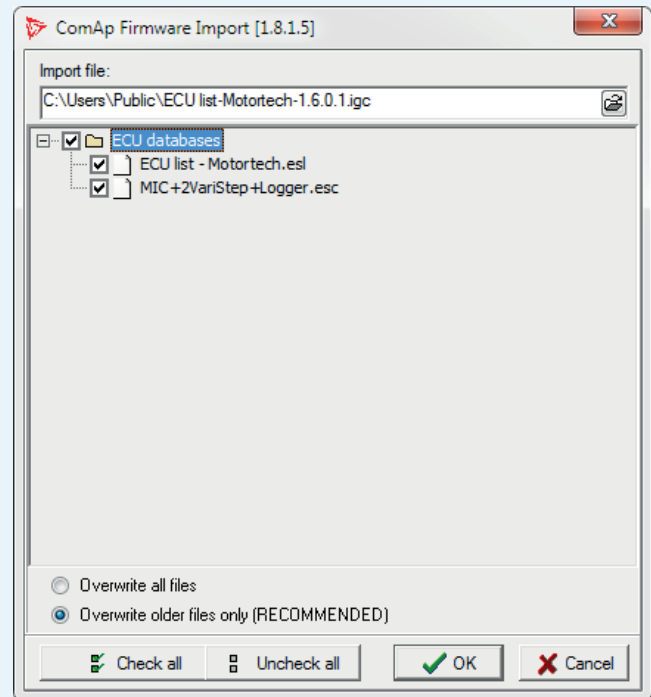
[https://www.motortech.de/fileadmin/user\\_upload/software/ECU\\_list-Motortech-1.6.0.zip](https://www.motortech.de/fileadmin/user_upload/software/ECU_list-Motortech-1.6.0.zip)

Please note that the MOTORTECH ECU list version 1.6.0 is also included in the IGC firmware file 2.6.0 for generator & CHP control systems ALL-IN-ONE.NTC and ALL IN-ONE.NT.

In order to install and use the MOTORTECH ECU list, the latest version of the ComAp PC Suite must be installed on your computer. The current ComAp PC Suite can be obtained via the web site of the manufacturer ComAp in the download center at:

<https://www.comap-control.com/support/download-center>

After downloading the new MOTORTECH ECU list, execute the IGC file by double-clicking it and then follow the instructions.



### ALL-IN-ONE firmware requirements

You need at least the following firmware versions installed on the ALL IN ONE if you want to use the new MOTORTECH ECU list 1.6.0:

- ALL-IN-ONE.NTC/ALL-IN-ONE.NT: 2.6.0
- ALL-IN-ONE.GAS: 1.2.0

Please note that the GenConfig Import Configuration Wizard cannot handle changes of ECU files.

### DISTRIBUTION

Customers / others	Yes
Representatives and Sales Partners	Yes
OEM partners	Yes
MOTORTECH subsidiaries	Yes



## ■ Product Update

### New Functions and Modifications

- One single ESC file *MIC+2VariStep+Logger* for all supported MOTORTECH ECU devices
  - Instead of providing various combinations of the supported MOTORTECH ECU devices, one single ESC file *MIC+2VariStep+Logger* supporting one MIC ignition controller, up to two VariStep stepper motor drivers and one MAN® data logger is provided. For proper operation, remove signals that you do not need in GenConfig. Removed signals can always be re-added in GenConfig if necessary.
- CAN protocol for MIC ignition controller changed
  - With MOTORTECH ECU list 1.6.0, the *CAN Mode* of the MIC ignition controller must be set to *J1939* and the *Source Address* to *52* via the MICT for proper CAN communication.
- New ECU transmit value *Global Timing Correction* added
  - With this transmit value, the global ignition timing position can be corrected in the MIC ignition controller. Negative values correct the global ignition timing position in the advanced direction, positive values in the retard direction. Please note that the transmit value *Global Timing Correction* overwrites any runtime adjustments made via the MICT or the PowerView3. If you use this transmit value for global timing correction, ensure that the minimum and maximum timing points for the configured schedules have been set in the MIC ignition controller. Additionally, create a PLC function that sets limits for the adjustment range of this transmit value.
- New analog output *ECUFaultReset* for MIC ignition controller added
  - This analog output enables reset commands to be sent to the MIC ignition controller to acknowledge warnings and errors. For triggering the ignition controller fault reset, assign an adequate source (for example *FltResButnEcho*) to the LBI *MICFaultReset*.

#### DISTRIBUTION

Customers / others	Yes
Representatives and Sales Partners	Yes
OEM partners	Yes
MOTORTECH subsidiaries	Yes